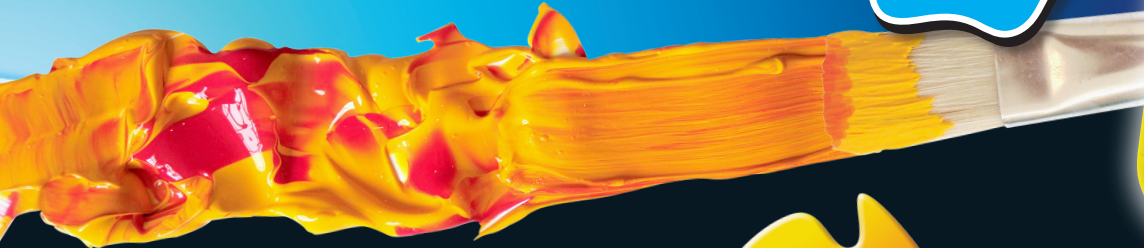


NEW

Chroma 2

SUPER TEMPERA

EASY CLEAN UP!



Australian Made and Owned

Chroma 2 is a new thick and creamy "Super" tempera for primary and secondary school students.

This new breed of paint combines the versatility of an acrylic with the easy clean up of a tempera.

Chroma 2 has a thick consistency and strong covering power so it can be used for impasto acrylic techniques. However unlike an acrylic it doesn't dry rock hard which makes it very easy to clean out of brushes and other equipment. It is perfect for use as a general purpose classroom paint and for printing techniques such as silk screen and lino block.

This is a highly pigmented paint and as such may stain some fabrics so it's sensible to wear protective clothing in the art room.

- BRIGHT STRONG COLOURS
- THICK CREAMY CONSISTENCY
- EASY CLEAN UP
- GREAT VALUE FOR MONEY
- PERFECT FOR SCREEN PRINTING
- WARM & COOL PRIMARY COLOURS
- NEVER SEPARATES IN BOTTLE
- AVAILABLE IN 2 LITRE BOTTLES
- NON-TOXIC

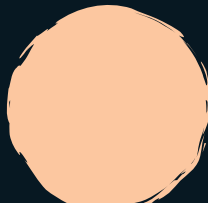
COLOUR RANGE



Cool Yellow



Warm Yellow



Honey



Warm Red



Cool Red



Purple



Warm Blue



Cool Blue



Green Deep



Green Light



Brown



Red Oxide



White



Black



CHROMA
It's all about the paint.

www.chromaonline.com

Available From: