

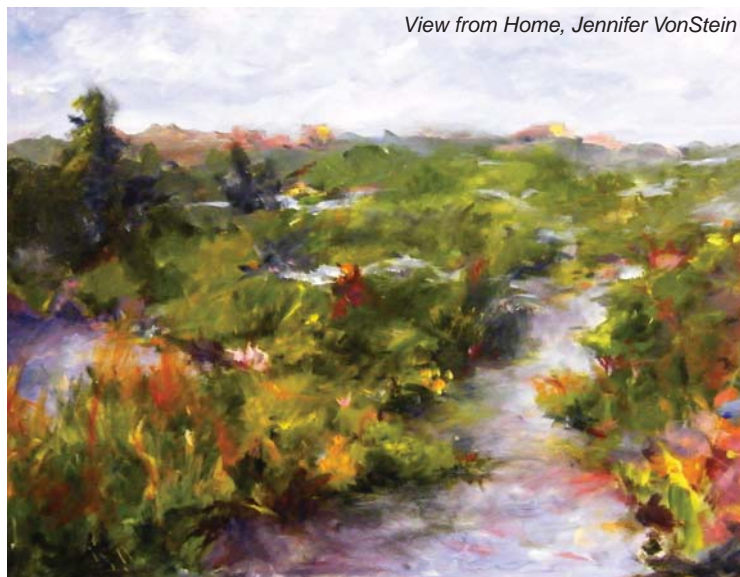
Basics of Interactive: Blending



For smooth transitions in paintings, the most natural and intuitive way to suggest this is by blending. It's easy to do with oil paint, but with the fast-drying nature of acrylics, blending has been incredibly challenging. Happily, blending is easy with Interactive, because it is the only acrylic that can be controlled to delay drying so you can blend, simply by using a water sprayer or by using the Unlocking Formula.

When it comes to blending with Interactive, there are generally three circumstances you will encounter:

1. During a session, when you are busy painting and want to delay drying of tacky paint so you can blend in wet paint.
2. During a session, when you want to blend, but a section of your painting is now touch-dry, so wet paint is overpainted instead of blending.
3. It's a few hours (or days) later, and the entire painting is touch-dry.



View from Home, Jennifer VonStein

BLENDING DEMONSTRATIONS

Materials:

- Surface – Panel, Paper or Canvas
- Atelier Gesso or Atelier Binder Medium
- Atelier Unlocking Formula
- Atelier Fine Mist Water Sprayer
- Atelier Interactive Professional Artists' Acrylic:
 - Pthalo Blue
 - Arylamide Yellow Light
 - Titanium White

Demonstration: Blending During A Session

1. Paint a swatch of Pthalo Blue on a gessoed canvas or a canvas that has been prepared with Binder Medium.



2. Work the swatch with your brush until you feel the paint start to become tacky and your brush drags.



3. Fill the Fine Mist Water Sprayer with water and spray your Pthalo Blue paint swatch until it feels workable and buttery again.



4. Blend in Titanium White.



When you are painting, be aware of this tacky stage. That's the paint interacting with you, telling you that it needs moisture if you want to continue wet blending. In fact, that's how Interactive got its name!

Demonstration: Blending During A Session But Paint Is Touch-dry

1. Blend Pthalo Blue and Titanium White. Set it aside for 30 minutes.



2. After 30 minutes, touch the swatch. It should be touch-dry.



3. Paint a stroke of Arylamide Yellow Light on the touch-dry swatch.



4. Using the Fine Mist Water Sprayer filled with water, spray your swatch until it feels workable and buttery again.



5. Blend in the Arylamide Yellow Light to make a green color around the edges.



Interactive will respond and reopen with water for about 1-3 hours depending on your surface, the humidity in your environment, how thickly you paint and what mediums you've used. But remember, you control whether or not Interactive reopens. *If you want to overpaint, withhold that moisture. If you want to blend, add moisture. It's that simple!*

Demonstration: Blending A Few Hours Later Or The Next Day

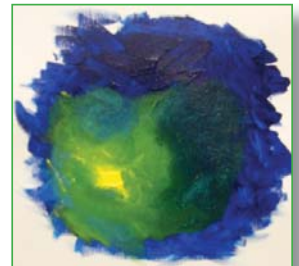
1. Use the above swatch of blended Pthalo Blue, Titanium White and Arylamide Yellow Light. Set it aside for 3 hours or overnight.



2. Fill the Fine Mist Water Sprayer with Unlocking Formula. Spray your swatch until it feels workable and buttery again.



3. Blend around the edges.



When you want to blend, but water doesn't reopen Interactive, then try the Unlocking Formula. The Unlocking Formula will reopen your paint until it has cured. Interactive cures generally in about 7-10 days. However, this time frame will depend on your surface, the humidity in your environment, how thickly you paint and what mediums you've used.

