

# A Quick Guide to CHROMA'S STUDENTS BRANDS



## Description

## Features

## Use

Please refer to relevant literature for full instructions.

### ChromaTemp Liquid Tempera

For ages 2 - 8 years.

Children's washable tempera paint designed for their first art experience.

- 17 colours
- Dries matte
- Opaque
- Waterbased
- Non-toxic
- Non- lightfast

Ideal for works on paper and cardboard. Use for finger painting. Dries quickly for satisfying results.



### Chromakidz Children's Waterbased Paint

For ages 2 - 8 years.

Children's washable paint designed for preschool, infants and primary students.

- 20 vivid colours
- Washable
- Non-toxic
- Water-based
- Non- lightfast

Home and classroom application. Suitable for any art practice that requires a vivid, waterbased paint that dries quickly and is flexible.

### Chroma SCHOOL acrylic colour

For ages 8 - 12 years.

Chroma School is an acrylic paint, not a tempera. This paint offers the best value, best quality school acrylic in its price range for young art students before they move up to Chromacryl. Available in 500ml and 2 litre bottles.

- Student quality acrylic paint
- Non-toxic
- 12 Brilliant, intermixable colours
- Never separates in the bottle
- Fast drying with a smooth, satin finish
- Flexible and water-resistant
- Cleans up with soap and water
- 2 litre and 500ml bottles fit Chroma Paint Dispenser
- Non- lightfast

School classroom application. Painting on paper, cardboard, canvas, canvas board, wood, glass etc. Combined with mediums for collage and mixed media.

### Chromacryl®

#### STUDENTS ACRYLIC

High School Students.

An acrylic paint for the elementary student's introduction to art at school. Based on the warm/cool colourmixing system. Combined with a range of mediums provides a versatility of classroom applications including silk screen printing, fabric painting, collage etc.

- 30 vibrant colours that dry to a water-resistant, satin finish
- Dries quickly
- Non-toxic
- Waterbased
- Non-lightfast
- Compatible with Chromacryl mediums

School classroom application Painting on paper, cardboard, canvas, canvas board, wood, glass etc. Combined with mediums for collage and mixed media.

### A>2 CHROMA ART STUDENTS ACRYLIC

#### THE ONLY ART STUDENTS' ACRYLIC

Art Students.

An acrylic paint range designed for tertiary art students allowing them to develop their painting skills. Has the same consistency and handling properties as professional artists' acrylics.

- 20 strongly pigmented colours
- Waterbased, non-toxic
- Dries to a low-gloss sheen
- Compatible with Atelier Mediums
- Non-lightfast

Full strength, diluted with water or mixed with Atelier Mediums. Designed for learning paint handling techniques. Can be used on paper or any properly gessoed surface.



# It's All About The Paint



We at Chroma want to give you and your students the best paint possible for the price. Chroma School has a high level of pigment and acrylic binders to give great coverage. Other thinner paint brands just don't give the same vibrancy of colour or coverage.



Chroma School is an acrylic paint not a tempera. It has acrylic polymer binders that give clean, clear colours and great paint coverage. A simple test on black paper will show the covering power of any paint. Tempera paints have almost no binders which give poor coverage and a fragile paint surface.

Chroma School is thick and adheres well to most painting surfaces – canvas, paper, wood, plastic, glass and cardboard. The paint has great flexibility which allows them to work well in collage, layering techniques and freehand painting. Other inferior paints become brittle and crack as they dry.

To expand the versatility of Chroma School use Chromacryl mediums. Mediums are simply paint additives that change the properties of paint eg: Chromacryl Retarder slows down the drying time of paint so that students can create blending and marbling effects.

Chroma School has a low odour formulation compared to many other junior artists' paints. It is non-toxic.

Chroma School's thick formula prevents massive spillages in the classroom and combined with the dispensing unit and silicon valve caps makes using paint in the classroom hassle free.

## A Simple Quality Paint Test.

To test the quality of paint, simply add white to any colour. If the paint is inferior the colour will go a drab greyish tone. A quality paint with high levels of pigment will go a clear pastel shade.

## Australian Made

Chroma is an Australian company, over 40 years old and Chroma School is Australian made.

## [www.chromaonline.com](http://www.chromaonline.com)

Visit our website to view our Artwork Australia student artworks. This valuable resource shows the best of Australia's young artists. You can simply download the images to inspire both yourself and your students.

## Lineta Card Test



Chroma School      Liquid Tempera

## Tinting Test



Chroma School      Liquid Tempera



# Handy Hints



## WEARABLE ART

A great idea which also protects the children's clothes from paint spills-have them bring in an old adult-sized t-shirt at the beginning of the art year, a solid colour is best. Wear the shirt while doing painting to prevent stains on school uniforms. At the end of the year it's a piece of wearable art!



## PAINT COVERAGE

When planning a large painting or a special event, use the following as a guide as to how much paint you will need.

**1 litre = 21m<sup>2</sup>**



## CLASS ART

To organise your art supplies and the class's brilliant art pieces, make an art wall. Keep the paint on shelves with a simple curtain over it to preclude light. The latest pieces of artwork can be displayed on the same wall.

Special pieces should be varnished with Chromacryl Painting Medium and Varnish to protect them from light and wear and tear.

Use Binder Medium to paste painted paper onto books as vibrant personally made covers.



*Chromacryl Painting Medium and Varnish and Chromacryl Binder Medium.*

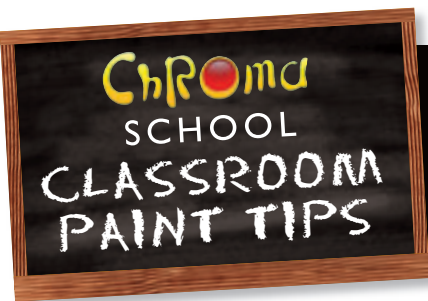
## LOOKING AFTER PAINT

Keep the paint well sealed and away from direct sunlight. The Chroma School Bulk Paint Dispenser holds 5 colours and the silicon valve caps supplied with the unit protects from accidental spills. Paint spilled onto the floors should be soaked up immediately using newspapers. Wash according to the Chroma School Stain Removal instructions. Different floor coverings will absorb paint at different rates and so be affected differently.

As Chroma School acrylic colour is non-toxic it can be safely put into the drain for disposal but why not try this idea. As a demonstration of environmentally responsible alternatives the dirty water from washing paintbrushes etc could be poured into a tray and put into the sun. As the water is evaporated by the sun it leaves the paint which can be wrapped in newspaper and put in with the garbage.



*Chroma Bulk Paint Dispenser.*



# Chroma Bulk Paint Dispenser



**IDEAL FOR  
CHROMA  
SCHOOL**



**NO  
MESS**

**HOLDS 500ml  
SIZES TOO!**

Simple, sturdy and no fuss, the unit holds 5 x 500ml bottles or 5 x 2 Litre Chroma School paint bottles, making dispensing paint in the classroom simple and easy.

Designed in two parts, the dispenser can be easily assembled, for classroom use and stored away when not needed.

## To Assemble

1. Simply replace the existing wad caps found in Chroma School paint bottles with the silicon valve caps, which are supplied with the dispenser. Our silicon valve caps have been specially designed so that they do not clog and only allow the paint to be dispensed when needed.
2. Slot the 2 parts of the dispenser together and tighten the screws.
3. Place bottles upside down in the unit and instantly you're ready. It's that simple.



[www.chromaonline.com](http://www.chromaonline.com)

*Chroma silicon valve cap*



# Painting Murals



## Painting Murals with Chroma School

If preparation is the key to success, it's no different when planning a painting mural inside or outside on buildings. It is important to properly prepare the surface you intend on painting to protect against mould and human wear and tear in passageways and high traffic areas etc. Here are some hints and tips to assist you.

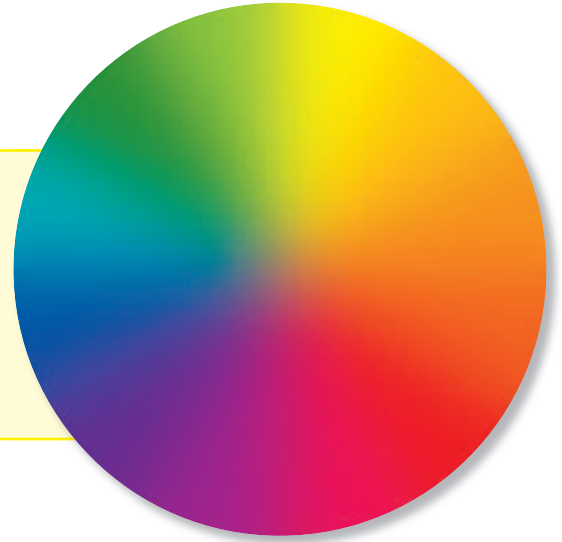
- All Chroma School murals should be done indoors or in covered walkways, which are not exposed to direct sunlight.
- If the wall is in terrible condition, consider having removable panels that could be plywood or something similar.
- If the wall is in reasonable condition, you should use house paint materials to fill any gaps, cracks etc.
- Then apply a white undercoat, preferably Chromacryl Gesso which has a high grit content allowing the next layers of paint to adhere better to the surface.
- Next, paint the mural with Chroma School.
- Leave for about 1 week before varnishing. Varnish first with Chromacryl Waterbased Finishing Varnish, then if possible use a solvent-based varnish like Chroma Solvent Finishing Varnish to protect the work further.
- Then stand back, admire and invite all to see the creation.



**Undercoat with Chromacryl Gesso**

## THE COLOUR WHEEL

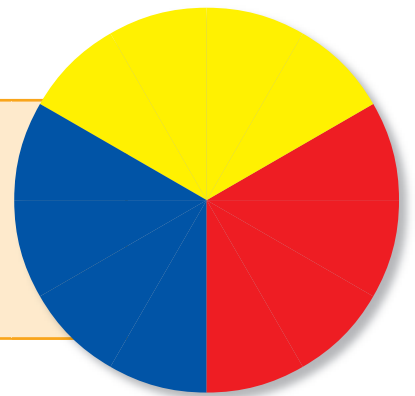
Choosing and mixing colours successfully is all about creating the maximum colour range from the minimum number of paints. Here is a colour wheel showing the 6 main colours. The colours that are directly opposite each other are called complementary colours. Blue and orange are complementary colours as are red and green and yellow and violet.



## PRIMARY COLOURS

### RED, YELLOW AND BLUE

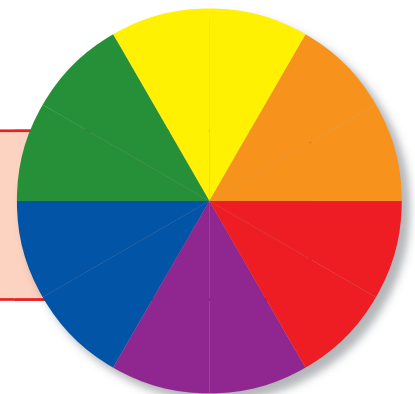
In traditional colour theory, these are the 3 pigment colours that can not be mixed or formed by any combination of other colours. All other colours are derived from these 3 hues



## SECONDARY COLOURS

### GREEN, ORANGE AND PURPLE

These are the colours formed by mixing the primary colours.



## TERTIARY COLOURS

### YELLOW-ORANGE, RED-ORANGE, RED-PURPLE, BLUE-PURPLE, BLUE-GREEN AND YELLOW-GREEN.

These are the colours formed by mixing a primary and a secondary colour. That's why the hue is a two word name, such as blue-green, red-violet, and yellow-orange.





# Stain Removal & Washing



## Chroma School

The pigment levels in Chroma School waterbased acrylic paints produce strong, vibrant colours designed to enrich the art experiences of young painters. Finding a balance between a good paint consistency and rich colour can be difficult when there is a need for washability.

We hope that you understand that there may still be a possibility that staining may occur. This depends on the type of paint, the colour and the fabric. Some pigments are more inclined to stain cotton fibres while others will stain synthetic fibres.

We have incorporated some suggestions to assist you in cleaning up clothing and brushes.



## Clothing

It is important to always ensure that your students or children wear protective clothing in the artroom, such as a fully lined art smock or thick, well covering clothing. Remember that prevention is better than a cure!

As outlined in our labelling we cannot guarantee that stains from our waterbased paints will be easily removed. Some fabrics may retain stains. Dark colours such as black, purple and blue can be difficult to remove if the stain has dried or has been heat set by hot water.

**If accidental staining does occur, soak garment in cold water and detergent overnight. Hand wash to dissolve any residual paint. To remove any pigment stains remaining in the fabric use a stain remover such as Preen or Sard's Wonder Soap and follow the packet directions. Gently scrubbing with a stiff bristle brush can help remove the remaining pigment stains. If staining is still present, we also recommend using Detol, Windex, Whiteboard Cleaner or Preen Dual Action over the stained area and carefully rubbing back to help remove the residual pigment. Once this has been removed wash and rinse as normal.**

**Never place clothes in a drier until all residue has been eliminated.**

## Brushes

A well maintained brush is a joy to use and will last longer.

Always clean dirty brushes as soon as you are finished with them, by rinsing in cold water.

To clean "dry paint" from brushes, simply soak for 20 minutes in Incredible Brush Cleaner and cold water and the paint will lift off. Soak overnight for stubborn paint residue.

Note: It's much better not to let brushes dry with paint on them in the first place.

**Never use painting brushes with glue.**

Always squeeze the water out and push the hairs back into their original shape.

Store paintbrushes upright.



Chroma  
SCHOOL  
CLASSROOM  
PAINT TIPS

# Incredible Brush Cleaner

  
CHROMA  
Brilliant Paint. Brilliant Minds



**INCREDIBLE  
CLEANING  
POWER**



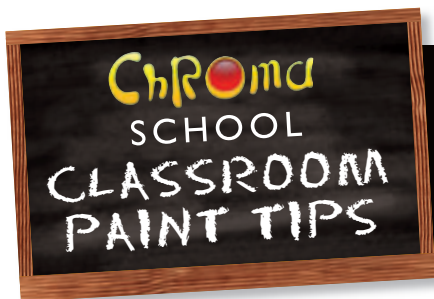
## Dead Brushes. Don't Throw Them Out!

Introducing Chroma's Incredible Brush Cleaner. Ideal for any art student, teacher, or artist wishing to revitalise their old hard paintbrushes.

This product is made from a special formulation which is designed to break through hardened acrylic, oil or lacquer on natural and synthetic paintbrushes, bringing them back to life.

250ml product code CR95600.

[www.chromaonline.com](http://www.chromaonline.com)



# Chroma School MSDS



CHROMA AUSTRALIA PTY LTD ACN 001 594 609  
17 MUNDOWI RD  
MT KURING-GAI NSW 2080, Australia  
TEL: (02) 9457 9922 FAX: (02) 9457 8082  
EMERGENCY TEL: AS ABOVE, or POISONS INFORMATION CENTRE

PAGE 1 of 2

DATE of ISSUE: 1 SEPTEMBER 2006

## Material Safety Data Sheet Not Classified as Hazardous According to the Criteria of Worksafe Australia

### IDENTIFICATION

Product name: **CHROMA SCHOOL** U.N. No: **N/A**  
Other names: **----** Hazchem: **N/A**  
Manufacturer's Product Code: **VARIOUS** Dangerous Goods Class & Sub Risk: **N/A**  
Poisons Schedule: **N/A**

Use: Acrylic paint for junior students.

### Physical Description/Properties

Appearance: **THICK PASTE, VARIOUS COLOURS** Flash Point (°C): **N/A**  
Boiling Point/Melting Point (°C) **N/A** Flammability limits (%):  
**N/A**  
Vapour Pressure (pascals or mm of Hg at 25°C) **N/A** Solubility in Water (g/L): **soluble**  
Specific Gravity **Approx 1g/ml**  
Other properties  
**SLIGHT AMMONIA SMELL**

### Ingredients

Chemical entity	CAS No.	Proportion
<b>PIGMENT, varied</b>	<b>----</b>	<b>COMMERCIAL IN CONFIDENCE</b>
<b>ACRYLIC EMULSION</b>	<b>NON HAZ</b>	<b>COMMERCIAL IN CONFIDENCE</b>
<b>THICKENERS</b>	<b>NON HAZ</b>	<b>&lt;10 %</b>
<b>AMMONIA</b>	<b>7664-41-7</b>	<b>2 %</b>
<b>PRESERVATIVES</b>	<b>149-30-4 / 2634-33-5</b>	<b>0.15 %</b>
<b>WATER</b>	<b>7732-18-5</b>	<b>&lt;50 %</b>

### HEALTH HAZARD INFORMATION

#### HEALTH EFFECTS:

**Acute:** Swallowed **NONE ALLOCATED**  
Eye **DIRECT CONTACT MAY CAUSE SLIGHT IRRITATION**  
Skin **PROLONGED OR REPEATED CONTACT MAY CAUSE SLIGHT IRRITATION**  
Inhaled **INHALATION OF VAPOUR MAY CAUSE IRRITATION**  
Chronic **NONE ALLOCATED**

#### FIRST AID:

Swallowed **GIVE TWO GLASSES OF WATER TO DRINK**  
Eye **FLUSH EYES WITH A LARGE AMOUNT OF WATER**  
Skin **WASH AFFECTED AREAS THOROUGHLY**  
Inhaled **MOVE SUBJECT TO FRESH AIR**

**ADVICE TO DOCTOR TREAT SYMPTOMATICALLY.**



# Chroma School MSDS (Continued)



CHROMA SCHOOL PAINTS

Page 2 of 2

---

## PRECAUTIONS FOR USE

---

### EXPOSURE STANDARDS

NONE

### ENGINEERING CONTROLS

USE IN WELL VENTILATED AREAS

### PERSONAL PROTECTION

NONE REQUIRED IF USED IN A WELL VENTILATED AREA

### FLAMMABILITY

N/A

---

## SAFE HANDLING INFORMATION

---

### STORAGE & TRANSPORT

KEEP FROM FREEZING. RECOMMENDED STORAGE CONDITIONS ARE BETWEEN 1°C AND 50°C.

### SPILLS & DISPOSAL

FOR LARGER QUANTITIES, CONTAIN ANY SPILLS WITH INERT MATERIALS, (SAND, SAWDUST ETC) AND TRANSFER TO CONTAINERS FOR DISPOSAL. KEEP SPILL OUT OF OPEN BODIES OF WATER. OBSERVE EPA REGULATIONS. SOAK UP SMALLER SPILLS WITH A RAG AND DISPOSE OF CAREFULLY.

### FIRE/EXPLOSION HAZARD

NOT APPLICABLE

---

### OTHER INFORMATION

---

### CONTACT POINT

MT KURING-GAI AUSTRALIA

---

**DATE OF ISSUE: 1 SEPTEMBER 2006**