

# Reveal Techniques with Interactive



One of the most exciting things about Interactive is that you can reopen paint layers. And if you can reopen paint to add color, it follows that you can remove color as well. No longer does a painting have to be created layer on top of layer - you can go up and down layers if desired.

## EXPLORATIONS

### Materials:

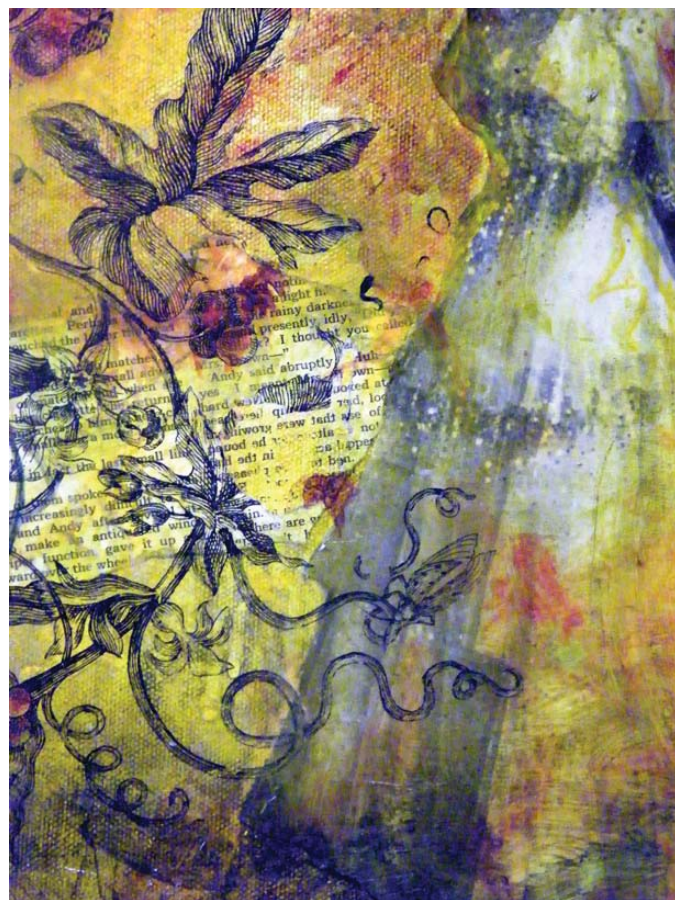
- Surface – Panel, Paper or Canvas
- Palette Knife
- Brushes
- Rag
- Atelier Gesso or Atelier Binder Medium
- Atelier Unlocking Formula
- Atelier Fine Mist Water Sprayer
- Atelier Interactive Professional Artists' Acrylic:
  - Arylamide Yellow Deep
  - Cobalt Turquoise Light
  - Crimson
  - Green Black
  - Indian Red Oxide
  - Pale Gold

### Exploration 1: Revealing Painted Underlayers

1. On a surface that has been prepared with Gesso or Binder Medium, apply a layer of Pale Gold. Let dry. Apply 1 to 2 coats of Binder Medium on top of the touch-dry Pale Gold. Let dry.



2. Cover the surface with a dark paint, such as Green Black. Make sure that the underlayer is covered.



*Queen Bird, Jennifer VonStein*

3. Wait 10 to 30 minutes or until dry. Using the Fine Mist Water Sprayer, rehydrate the Green Black layer. Using a rag or a knife, remove or scratch back until you see the underlayer.



**Binder Medium will seal layers so you can overpaint with freedom. If you get to a point in your painting where you like what is happening, you can seal the painting with Binder Medium. As you develop the piece, if it goes in a direction you do not like, you can always wipe away layers to get down to where you “saved” your work.**

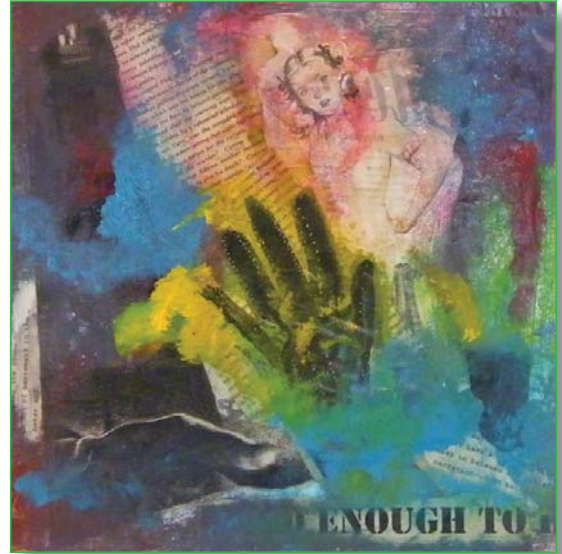
## Exploration 1: Revealing Collaged Underlayers

Because Binder Medium is an acrylic emulsion, it is an excellent glue for collage. Use Binder Medium to adhere and seal images as you go. It also allows you to paint on top of them and then remove touch-dry paint to reveal the hidden imagery.

1. On a surface that has been prepared with Gesso or Binder Medium, create a collage of ephemera. Use Binder Medium to adhere the elements to the surface. When they are adhered, apply 1 to 2 coats of Binder Medium on top to seal those images.



3. Let dry overnight. Using the Fine Mist Water Sprayer filled with Unlocking Formula, spray areas to reopen the paint. Using a rag, remove the top layer of color to reveal the images below.



Use a stencil to remove areas in a specific shape. The juxtaposition of hard edges from your collage, the blended surface on top and the defined silhouettes from the stencils creates very interesting paintings.

2. Cover the entire surface with Interactive paint in various colors to create an interesting abstract painting. This piece was done with Arylamide Yellow Deep, Cobalt Turquoise Light Hue, Crimson, and Indian Red Oxide.

